

## BOOKING FORM FOR SCHOOLS 2008

It is advisable to phone us first to check available dates on 0845 345 1420 or email [sales@southdevonrailway.org](mailto:sales@southdevonrailway.org)

To: South Devon Railway, The Station, Buckfastleigh, Devon TQ11 0DZ  
 T: 0845 345 1420  
 F: 01364 642170  
 E: [sales@southdevonrailway.org](mailto:sales@southdevonrailway.org)

Name of school	<input type="text"/>	Telephone	<input type="text"/>
Address	<input type="text"/>	E-mail	<input type="text"/>
	<input type="text"/>	Date of visit	<input type="text"/>
	<input type="text"/>	Time of travel from Buckfastleigh	<input type="text"/>
Postcode	<input type="text"/>	Year group(s)	<input type="text"/>
Name of party organiser	<input type="text"/>	SDR education offer required	Yes <input type="radio"/> No <input type="radio"/>

### CHOSEN OUTING (please choose one option)

**Outing 1** – South Devon Railway, Dartmoor Otters & Buckfast Butterflies and Totnes Rare Breeds Farm  
 £9.00 with a single trip per child  
 One helper **FREE** for every six children

Number of children   
 Number of adults

**Outing 2** – South Devon Railway and Dartmoor Otters & Buckfast Butterflies  
 £7.20 with a return train trip or  
 £6.20 with as single train trip  
 One helper **FREE** for every six children

Number of children   
 Number of children   
 Number of adults

**Outing 3** – South Devon Railway and Totnes Rare Breeds Farm  
 £6.30 with a return train trip or  
 £5.30 with as single train trip  
 One helper **FREE** for every six children

Number of children   
 Number of children   
 Number of adults

### OTHER OPTIONS

**South Devon Railway only**  
 £3.80 return  
 £2.80 single  
 One helper **FREE** for every six children

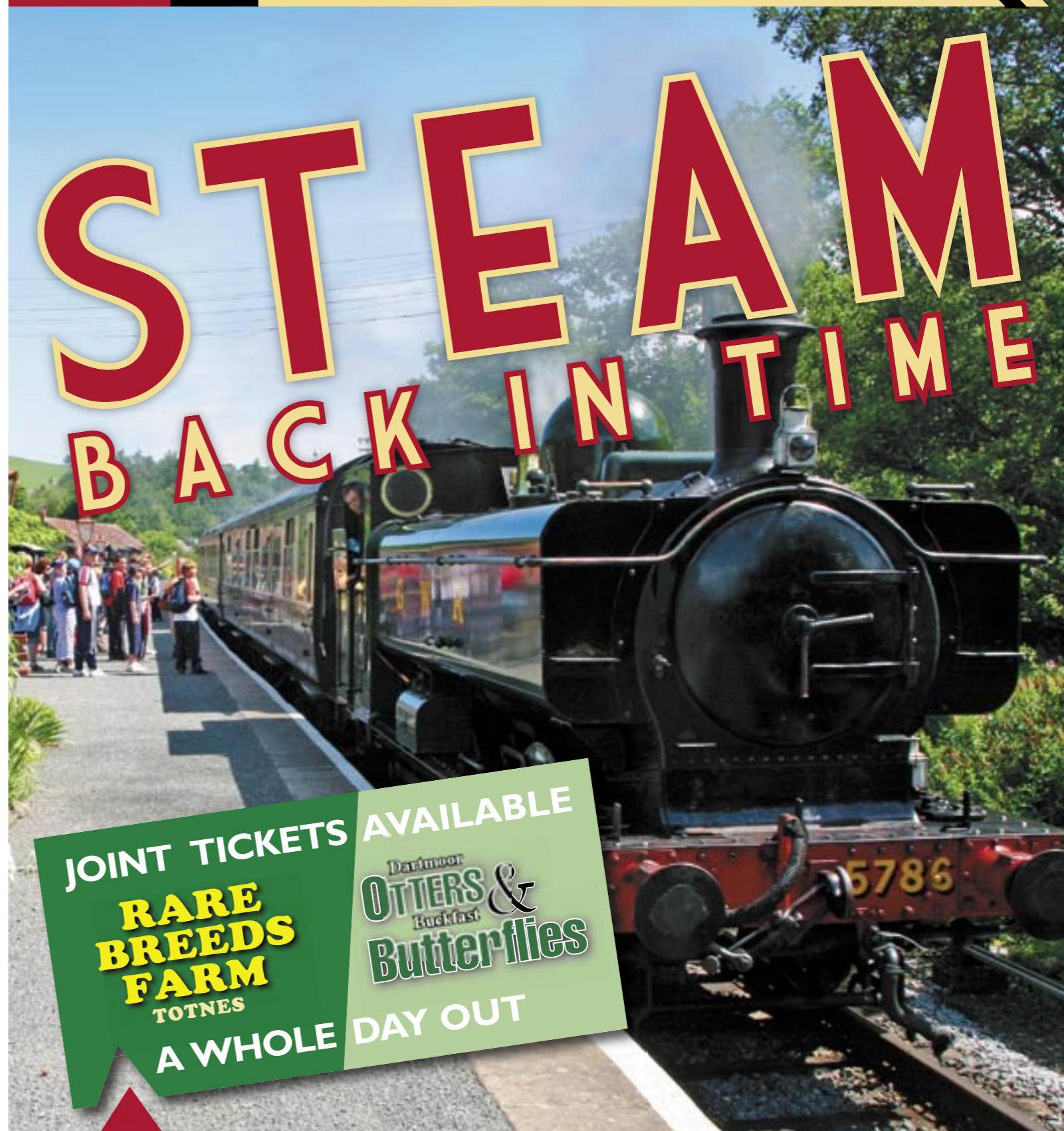
Number of children   
 Number of children   
 Number of adults

**Dartmoor Otters & Buckfast Butterflies**  
 £4.50  
 One helper **FREE** for every six children

Number of children   
 Number of adults

**Totnes Rare Breeds Farm only**  
 £3.00  
 One helper **FREE** for every six children

Number of children   
 Number of adults



## A FIRST CLASS DAY OUT FOR SCHOOLS

Take a trip back in time by steam train through beautiful, hidden Devon scenery.  
 Plus gardens, riverside walks, museum, shop, play area and so much more.



**SOUTH DEVON RAILWAY**  
 BUCKFASTLEIGH • STAVERTON • TOTNES



The South Devon Railway is an excellent, fascinating venue for school visits that offers great opportunities to enrich many parts of the curriculum, particularly in the areas of the sciences, geography and history – whilst keeping children of all ages entertained and absorbed throughout their time with us.

Central to the South Devon Railway is a seven mile standard gauge railway, opened in 1872, operated by historic steam locomotives and carriages built between the 1920s and 1960s. It runs between Buckfastleigh and Totnes, through the hidden valley of the river Dart, which is packed with wildlife. Buckfastleigh is just off the A38.

We also have more to enhance your visit, through two associated attractions adjacent to us: Dartmoor Otters & Buckfast Butterflies at Buckfastleigh and the Totnes Rare Breeds Farm at Totnes.

## Lots to see and do

At Buckfastleigh, we have a safe, enclosed site with plenty of room for parking, large open play area, gardens, refreshment rooms, shop, picnic site and a museum with a group presentation area. Our midway station is Staverton where time and progress have stood still. At Totnes we have built a station almost entirely from historic buildings dismantled from all over the west country and re-erected.



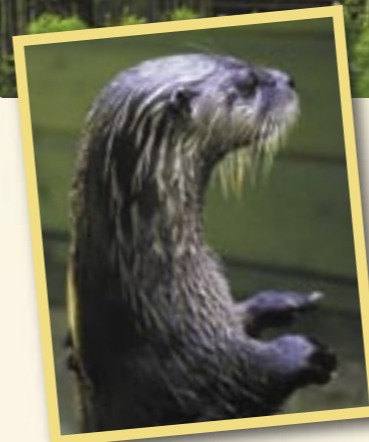
## Education officer

If required, our education officer, Bob Vaughton, who is a highly experienced teacher, would be delighted to work with you to organise an interesting and relevant experience for your pupils. He is available on the railway on Thursdays during our running season, by prior arrangement, and can accompany you on the train to answer any questions you and your pupils may have. An informative, illustrated talk for up to 30 people on various aspects of the railway, such as its history and how steam locomotives work, can be organised. Please feel free to send us details of any project or theme you are planning and we will endeavour to help you develop it.

## Friendly environment

We are keen to develop further contacts with schools and build on our existing excellent reputation for friendliness and good value. We have available a number of worksheets and risk assessments to help you prepare for your visit.

Our staff will do their very best to ensure a memorable and worthwhile visit for your teaching staff and a great fun day out for pupils. Full details of the railway are in our enclosed leaflet and at [www.southdevonrailway.org](http://www.southdevonrailway.org).



## Three outing options

We offer three different outings to our railway that are suitable for children of all ages

### Super Outing 1

A return or single train trip from Buckfastleigh to Totnes (or vice versa), including access to the facilities at Buckfastleigh PLUS visit to Dartmoor Otters & Buckfast Butterflies AND a visit to the Totnes Rare Breeds Farm.

£9.00 with a single trip child.

One helper Free for every six children.

### Outing 2

A return or single train trip PLUS a visit to Dartmoor Otters & Buckfast Butterflies where a talk is also available.

£7.20 with a return train trip

£6.20 with a single train trip

One helper **FREE** for every six children.

The train journey takes half an hour in each direction (see timetable).

Visits to Dartmoor Otters & Buckfast Butterflies and The Totnes Rare Breeds Farm, which are owned and run by separate organisations, can take between one and two hours.

Toilets are available at Buckfastleigh and Totnes Littlehempston stations and at Dartmoor Otters & Buckfast Butterflies.

Our facilities are disabled-friendly.

**For more details, including booking our education officer, please call us on 0845 345 1420, fax 01364 642170 or email [sales@southdevonrailway.org](mailto:sales@southdevonrailway.org)**

### Outing 3

A return or single train trip PLUS a visit to the Totnes Rare Breeds Farm.

£6.30 with a return train trip

£5.30 with a single train trip

One helper **FREE** for every six children.

### Other options

You may choose to visit just one of the attractions, either the railway, butterflies or rare breeds.

Railway: £3.80 return per child, £2.80 single per child

Otters & Butterflies: £4.50 per child

Rare Breeds: £3.00 per child

One helper **FREE** for every six children.

